



**CHINESE AMERICAN MEDICAL SOCIETY'S
MEDICAL STUDENTS**

CAREER DAY

09.07.2019 | NEWYORK-PRESBYTERIAN BROOKLYN METHODIST HOSPITAL

Brought to you by Chinese American Medical Society in partnership with the Asian Services Programs at: Maimonides Medical Center, Mount Sinai Beth Israel, NewYork-Presbyterian Brooklyn Methodist Hospital, NewYork-Presbyterian Lower Manhattan Hospital, & NewYork-Presbyterian Queens

CAMS MEDICAL STUDENTS CAREER DAY 2019

SATURDAY SEPTEMBER 7, 2019 | NEWYORK-PRESBYTERIAN BROOKLYN METHODIST HOSPITAL

CONFERENCE REGISTRATION & BREAKFAST

9:00 AM TO 9:20 AM
CAFETERIA

OPENING REMARKS

9:20 AM TO 9:30 AM
EAST PAVILION AUDITORIUM

MARY LEE-WONG, MD

President, Chinese American Medical Society

CUPCAKES

STEVEN H. SILBER, DO

Regional Executive Medical Director, NewYork-Presbyterian Brooklyn Methodist Hospital

BARRIERS & CHALLENGES OF CARING FOR ASIAN PATIENTS

9:30 AM TO 10:20 AM
MODERATOR: SHIRLEY MO

WAN LING LAM, MD

Hospital Medicine

BENJAMIN E. LEE, MD

Thoracic Surgery

YICK MOON LEE, MD

Pediatrics

ANNIE S. LI, MD

Psychiatry

RESIDENCY PROGRAM DIRECTORS PANEL

10:20 AM TO 11:05 AM
MODERATOR: SARAH SCHRADER

SAMUEL AYALA, MD

Emergency Medicine

PIES

JOHN HO, MD

Pediatric Anesthesiology

SOPHIA MIKITYANSKIY, DO

Psychiatry

REBECCA RHEE, MD, FACS, FASCRS

Surgery, Colon & Rectal

DANIEL I. STEINBERG, MD

Hospital Medicine, Internal Medicine

CAMS MEDICAL STUDENTS CAREER DAY 2019

SATURDAY SEPTEMBER 7, 2019 | NEWYORK-PRESBYTERIAN BROOKLYN METHODIST HOSPITAL

BREAK

11:05 AM TO 11:15 AM

CLINICAL RESEARCH & HEALTH CARE FOR CHINESE PATIENTS

11:15 AM TO 11:50 AM

MODERATOR: ELLEN LIANG

VICTOR T.CHANG, MD

Hematology/Oncology

WENHUI LI, PHD

Director, Statistical Analysis & Reporting

Bureau of Vital Statistics

New York City Department of Health & Mental Hygiene

NAUMI FELDMAN, DRPH

Director of Research & Evaluation

Charles. B. Wang Community Health Center

WHAT ELSE CAN YOU DO WITH YOUR MEDICAL DEGREE?

11:50 AM TO 12:30 PM

MODERATOR: JESSICA TAN

DARA HUANG, MD, MMSC

Nephrology & Internal Medicine

Medical Cannabis Physician Consultant

THOMAS TSANG, MD, MPH

Internal Medicine

CEO & CO-Founder, Valera Health

BENJAMIN E. LEE, MD

Thoracic Surgery

Medical Expert Witness

STUDENT & FACULTY LUNCH MIXER

12:30 PM TO 1:30 PM

CAFETERIA



Samuel Ayala, MD

Specialty: Emergency Medicine
Emergency Medicine Attending
Associate Director, Emergency Ultrasound Division
Medical Student Clerkship Director
NewYork-Presbyterian Brooklyn Methodist Hospital



Victor T. Chang, MD

Specialty: Hematology/Oncology
Attending, Hematology/Oncology
VA New Jersey Health Care System
Professor of Medicine
Rutgers- New Jersey School of Medicine



Naomi Feldman, DrPh, MPH

Specialty: Public Health
Director of Research and Evaluation
Charles B. Wang Community Health Center



John Ho, MD

Specialty: Pediatric Anesthesiology
Director of Pediatric Anesthesiology
Lenox Hill Hospital, Northwell Health



Dara Huang, MD, MMSc

Specialty: Nephrology
Assistant Clinical Professor
Icahn School of Medicine at Mount Sinai



Wan Ling Lam, MD

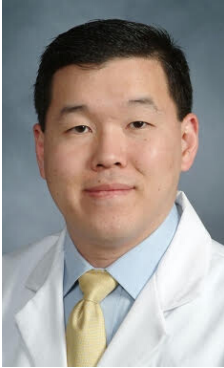
Specialty: Hospital Medicine

Assistant Professor

Icahn School of Medicine at Mount Sinai

Medical Director, Asian Services

Mount Sinai Beth Israel



Benjamin E. Lee, MD

Specialty: Thoracic Surgery

Chief, Division of Thoracic Surgery

NewYork-Presbyterian Queens

Assistant Professor of Clinical Cardiothoracic Surgery

Weill Cornell Medical College, Cornell University



Yick Moon Lee, MD, FAAP

Specialty: Pediatrics

Associate Professor of Clinical Medicine

Lenox Hill Hospital Northwell Health



Annie Sze Yan Li, MD

Specialty: Psychiatry

Assistant Professor of Clinical Psychiatry

Division of Child and Adolescent Psychiatry

Weill Cornell Medical College

Assistant Attending in Clinical Psychiatry

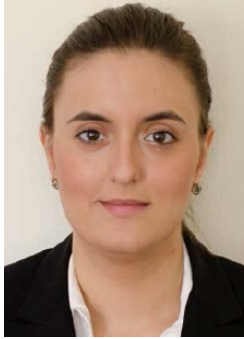
New York-Presbyterian Hospital

Chief, Pediatric Emergency Psychiatry Service



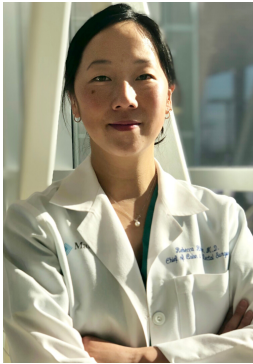
Wenhui Li, PhD

Director, Statistical Analysis and Reporting
Bureau of Vital Statistics
New York City Department of Health and Mental
Hygiene



Sophia Mikityanskiy, DO

Specialty: Psychiatry
Associate Program Director
Psychiatry Residency Program
Maimonides Medical Center



Rebecca Rhee, MD, FACS FASCRS

Specialty: Surgery
Chief, Colon & Rectal Surgery
Associate Program Director
General Surgery Residency Program
Maimonides Medical Center



Daniel I. Steinberg, MD, FACP, SFHM

Specialty: Hospital Medicine
Associate Chair for Education & Residency Program
Director Department of Medicine
Mount Sinai Beth Israel
Associate Professor of Medicine & Medical Education
Icahn School of Medicine at Mount Sinai



Thomas Tsang, MD, MPH

Specialty: Internal Medicine, Public Health
CEO & Co-Founder Valeria Health

CHINESE AMERICAN MEDICAL SOCIETY'S MEDICAL STUDENTS CAREER DAY

PLANNING COMMITTEE CO-CHAIRS

Wan Ling Lam, MD
Yick Moon Lee, MD

COMMITTEE MEMBERS

Benjamin Lee, MD
Steven Cai, MD
Shan-Chin (Winson) Chen, MD
Yu Shia Lin, MD

Janice Yang (Maimonides Medical Center)
Lucia Chan (Mount Sinai Beth Israel)
Frances L. Wong, LCSW (NewYork-Presbyterian Brooklyn Methodist Hospital)
Chui-Man Lai (NewYork-Presbyterian Lower Manhattan Hospital)
Ada Wong (New York-Presbyterian Lower Manhattan Hospital)
Ming-der Chang, PhD (NewYork-Presbyterian Queens)

Hanbin Wang (SUNY Downstate Medical Center)
Jessica Tan (Icahn School of Medicine at Mount Sinai)
Jessie Cai (SUNY Downstate Medical Center)
Justin Chin (Touro College of Osteopathic Medicine)
Sarah Schrader (Weill Cornell Medicine)
Shirley Mo (CUNY School of Medicine)

CAMS would like to thank the leadership at NewYork-Presbyterian Brooklyn Methodist Hospital for hosting and sponsoring the 2019 CAMS Medical Student Career Day program. Thank you to Coalition of American-American IPA, Inc. (CAIPA), Maimonides Medical Center, Mount Sinai Beth Israel, NewYork-Presbyterian Lower Manhattan Hospital and NewYork-Presbyterian Queens for your continued support of CAMS Medical Students Career Day. CAMS would also like to thank all of the Medical Students that represent their schools on the CAMS Board of Directors as well as those that have volunteered their time to serve on this year's planning committee. A special thank you to this year's panelists, moderators and volunteers- this program would not be possible without all of you!



OUR MISSION

The mission of CAMS is to improve the health status of Chinese Americans and to promote excellence in health care for all through the mobilization of health care professionals.



camsociety.org

11 E Broadway Unit 4C
New York, NY 10038
(212) 334-4760